



Judy Seldin-Cohen, *Chair*



Tanya Blackmon
Novant Health and Charlotte
Mecklenburg Community
Foundation Board



Elizabeth Trotman
Foundation For The Carolinas



Dena Diorio
Mecklenburg County



Jay Everette
Wells Fargo



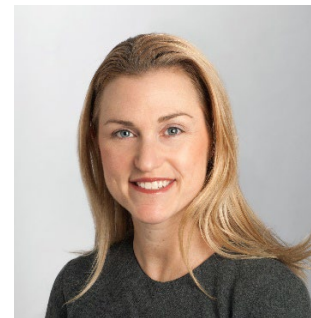
Deborah Majewski
Leon Levine Foundation



Frances Thompson
Community Volunteer



Anthony Trotman
Mecklenburg County



Jenny Ward
Bank of America



Pamela Wideman
City of Charlotte