

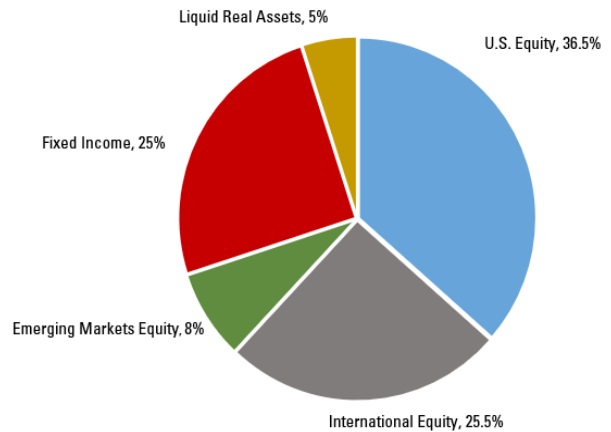
ACTIVE LONG-TERM GROWTH POOL

Foundation For The Carolinas offers diverse investment options to grow assets for maximum philanthropic impact

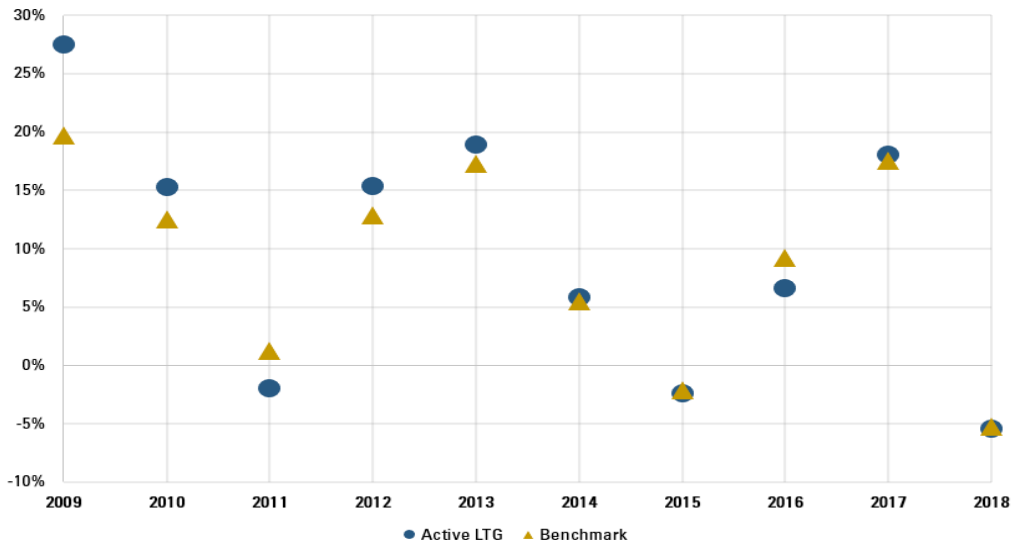


- ▶ Seeks long-term capital appreciation without exposure to hedge funds or private equity
- ▶ Focuses on investing with a moderate to long-term horizon
- ▶ Offers broad domestic, international and emerging market exposure via large cap and small cap securities with a modest allocation to fixed income

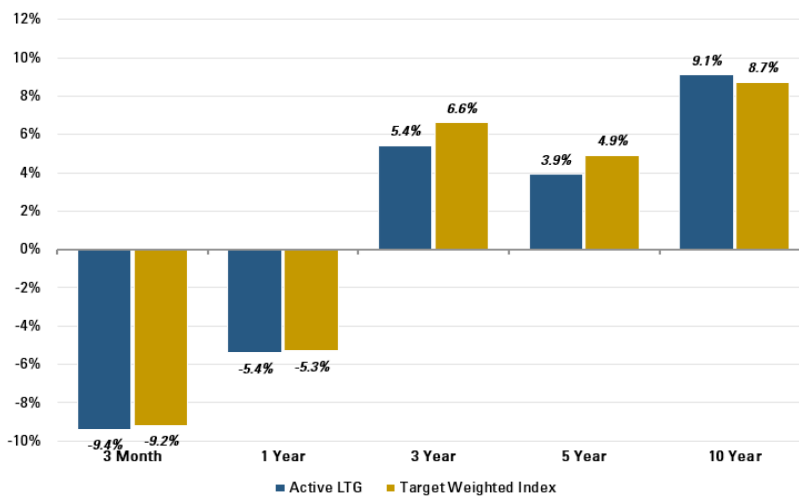
Target Allocations



Annual Performance vs. Benchmark*



Returns* (as of December 31, 2018)



Contact us today for more information:

Greg Beuris
Vice President & Director,
Investment Reporting

Call

704.973.4522
800.973.7244

Email

gbeuris@fftc.org

Learn more

www.fftc.org

*Net of investment manager fees. Benchmarks available upon request.

ACTIVE LONG-TERM GROWTH POOL

Asset Allocation, Managers and Expenses



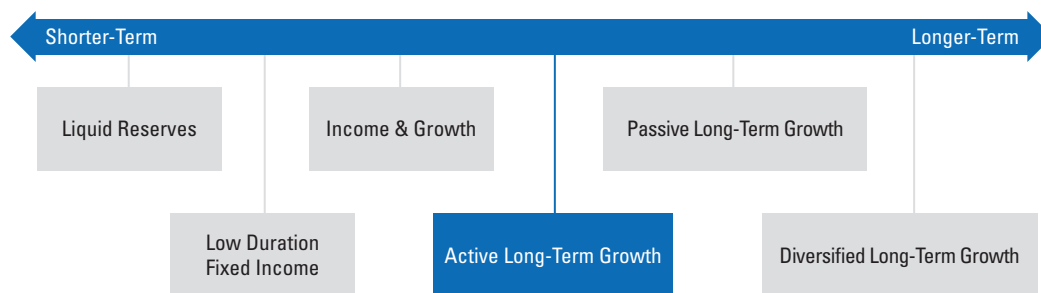
Growth Assets

Asset Class	Percentage	Asset Class	Percentage
US Equity	36.5%	International Equity	25.5%
<ul style="list-style-type: none"> - Acadian US Low Volatility - Aristotle Small/Mid Cap - OSAM Market Leaders Value - Polen LC Growth - SSgA S&P 500 		<ul style="list-style-type: none"> - Acadian Non-US Low Volatility - American Century - Arrowstreet EAFE - LSV EAFE Value 	
Emerging Markets Equity	8%	Liquid Real Assets	5%
<ul style="list-style-type: none"> - Cooper Rock Emerging Markets Small Cap - DFA Emerging Markets Value - Investec 4Factor Emerging Markets - Mondrian Emerging Markets 		<ul style="list-style-type: none"> - Lazard Global Infrastructure - SSgA Global Large/Mid Natural Resources Index - SSgA Global REIT 	

Risk Reduction Assets

Asset Class	Percentage
Fixed Income	25%
<ul style="list-style-type: none"> - Manulife - Prudential 	

Asset Strategies



Individual fund earnings may not reconcile to Foundation For The Carolinas' reported performance as a result of contributions, distributions and rebalancing in the fund. A successful investment program includes consideration of your grantmaking intentions and timeframe for investments. Past performance is not indicative of future results.

Expense Ratio* 0.65%

*Includes weighted Investment Manager and other investment-related expenses.